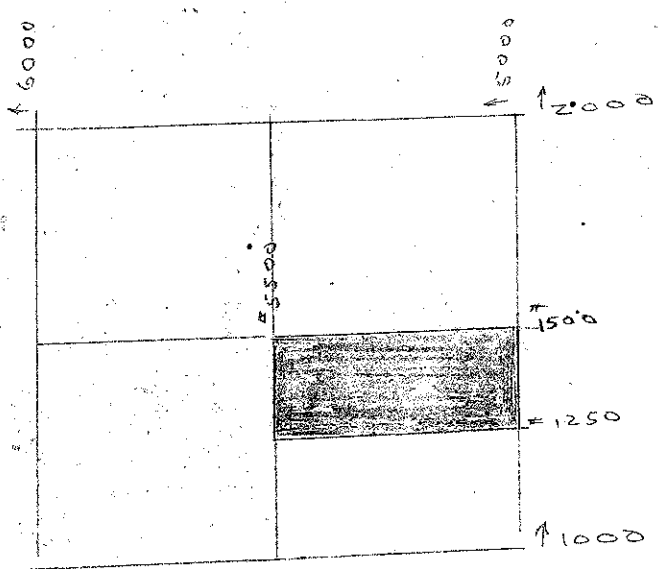


DRAWING NUMBER
20/75

DRAWING NUMBER

DRAWING NUMBER

DRAWING NUMBER



PLAT OF HAVERHILL ACRES

AN ADDITION TO WEST PALM BEACH
IN SECTION 26, TWP 43 S., RG. 42 E.

PALM BEACH COUNTY, FLORIDA

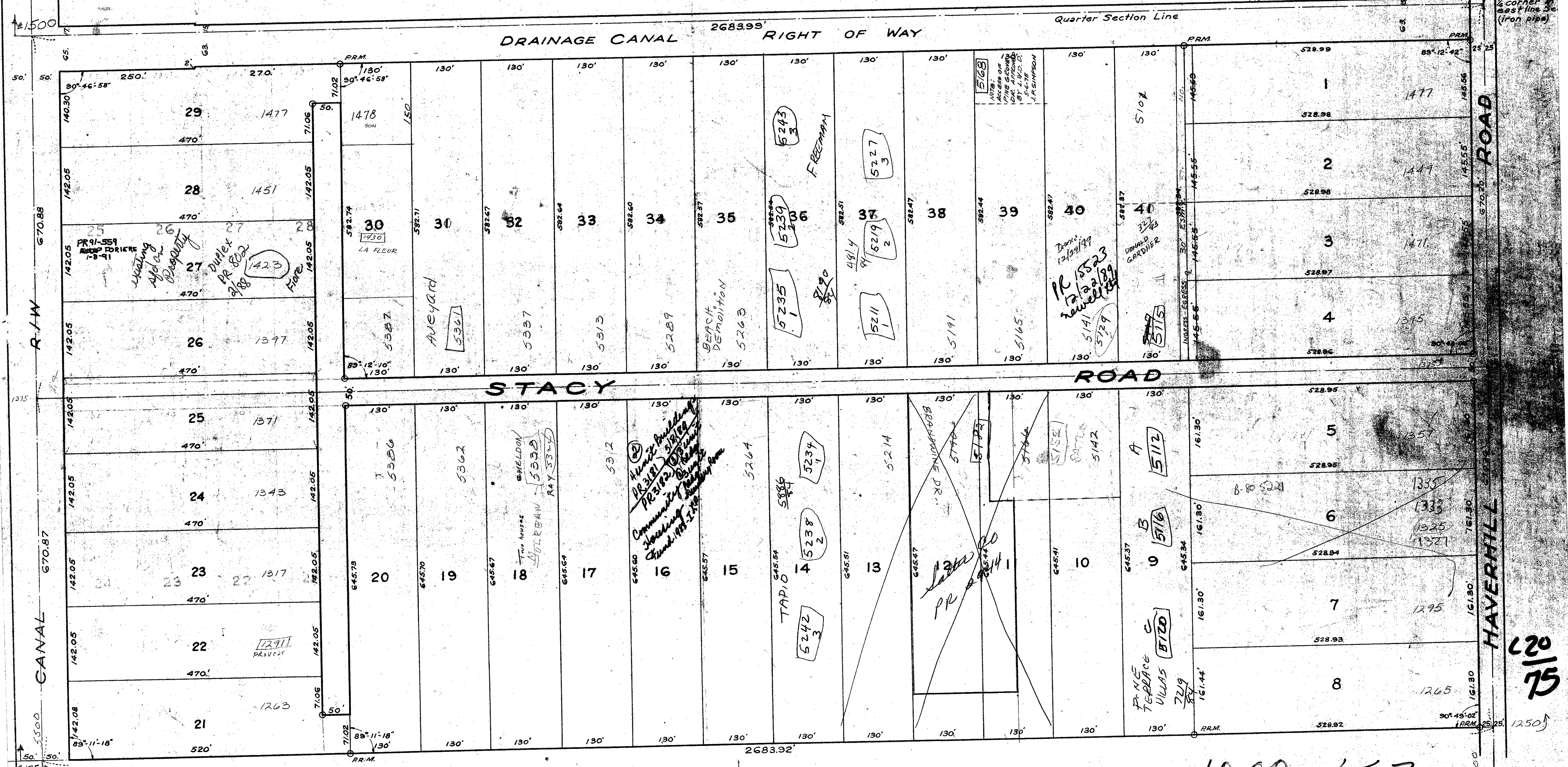
FEBRUARY 1946

SCALE 1" = 100'

E. ELLIOTT GROSS
REGISTERED ENGINEER & SURVEYOR

Approved: February 25 A.D. 1946
Board of County Commissioners
By: *J. B. Hines*
Asst. County Engineer.

STATE OF FLORIDA
COUNTY OF PALM BEACH
This Plat was filed for record on this 26th day of February, 1946, and duly recorded in Plat Book 29, page 75.
J. ALEX WENNETT, Clerk of the Board
Agnes B. Innes



STATE OF FLORIDA
COUNTY OF PALM BEACH
KNOW ALL MEN BY THESE PRESENTS THAT LAKE WORTH HOLDING COMPANY a Florida corporation, The Owner of the tract of land lying and being in Palm Beach County, Florida, shown on the attached Plat as HAVERHILL ACRES, and more particularly described as follows: to wit: The North Half of the Southeast Quarter of Section 26, Township 43 South, Range 42 East, Palm Beach County, Florida,
has caused the same to be surveyed and platted as shown hereon, and does hereby dedicate to the perpetual use of the public as public roads, the roads as shown hereon, reserving however, unto itself, its successors, assigns or legal representatives, the reversion or reversions thereof, whenever the same shall be abandoned by the public or discontinued by law.
IN WITNESS WHEREOF, it has caused these presents to be signed by its President, attested by its Secretary, and its corporate seal to be affixed hereto, this 23rd day of February, A.D. 1946.

STATE OF FLORIDA
COUNTY OF PALM BEACH
I HEREBY CERTIFY That on this day personally appeared before me an officer duly authorized to administer oaths and take acknowledgments, W.G. MATHES and RALPH J. BLANK, President and Secretary, respectively, of LAKE WORTH HOLDING COMPANY, a corporation, to me well known, and known to me to be the individuals described in, and who executed the foregoing dedication and they acknowledged before me that they executed the same as such officers of said Corporation for the purposes therein expressed and that their act and deed was the act and deed of said Corporation. I WITNESS my hand and official seal at West Palm Beach, County of Palm Beach, and State of Florida, this 23rd day of February, A.D. 1946.

STATE OF FLORIDA
COUNTY OF PALM BEACH
I HEREBY CERTIFY that the plat shown hereon as HAVERHILL ACRES is a true and correct representation of a survey made under my direction of the foregoing described property and that said survey is accurate to the best of my knowledge and belief, and that permanent reference monuments (P.R.M.) have been placed as required by law.

Attest: By: *Ralph J. Blank*
its Secretary
By: *W.G. Mathes*
its President

My Commission expires: December 14, 1948

Evelyn M. Newman
Notary Public

Subscribed and Sworn to before me this 23rd day of February, A.D. 1946.

My Commission expires: December 14, 1948

E. Elliott Gross
Registered Land Surveyor
Florida Certificate No. 133

1000-663

20/75

1
26/47